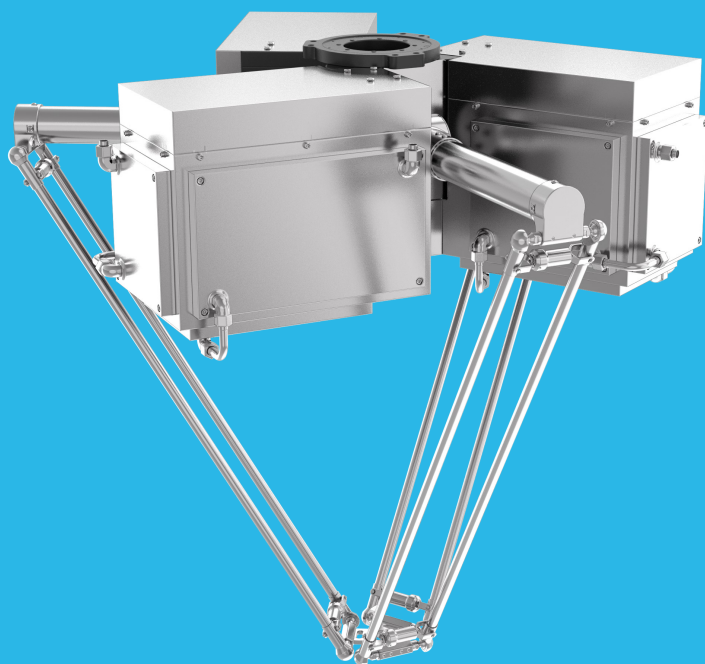


# 并联机器人

## 选型手册

Parallel robot selection Manual

D3WC



## ● 型号和符号

D3WC	1300	P5	A1	E1	FXGX
机型	型号	负载	控制器类型	控制柜类型	视觉
D3WC	1300	P5: 5kg	A1: ATOMCONTROL A2: KEBA CONTROL	E1: ATOM-01 E2: ATOM-02 E3: 定制	F0G0: 无视觉 FXGX: 有视觉

## ● Model and Symbol

D3WC	1300	P5	A1	E1	FXGX
Robot type	Type	Load Type	Control Type	Control Cabinet	Vision Type
D3WC	1300	P5: 5kg	A1: ATOMCONTROL A2: KEBA CONTROL	E1: ATOM-01 E2: ATOM-02 E3: Custom	F0G0: Without vision FXGX: With vision

## D3WC-1300-P5



高耐温 High temperature resistance  
 高稳定性 High stability  
 大空间 Large space  
 水冷系统 Water cooling system

◆ 标准循环时间小于0.6s,满足追求最高速度和最经济需求

The standard cycle time is less than 0.6s, meeting your pursuit for the maximum speed and economic.

◆ 全金属臂设计,配合水循环系统,轻松应对高温环境

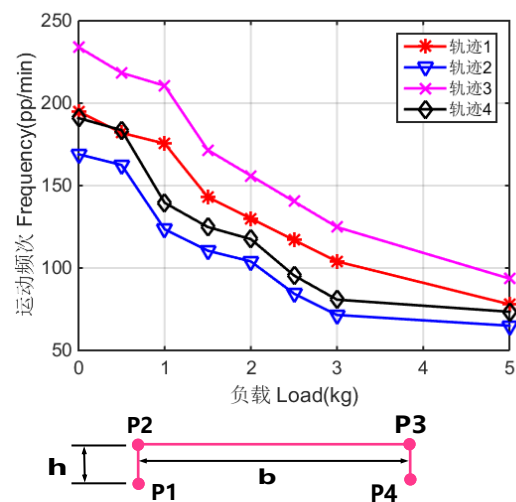
All metal arm design, combined with a water circulation system, effortlessly handles high temperature environments

◆ 非常适用于白酒瓶、化妆品瓶等玻璃瓶制品的搬运

It is very suitable for carrying white wine bottles, cosmetics bottles and other glass bottles

型号 Type		D3WC-1300-P5
轴数 Axes		3
最大负载 Payload		5kg
机器人本体 Manipulator	重量 Weight	140kg
	工作空间直径 Diameter	1300mm
重复定位精度 repeatability	位置 Position	0.05mm
	旋转 Rotation	—
旋转范围 Rotation range		—
允许负载最大旋转惯量 Allowable maximum moment of inertia		—
主动臂角度范围 Angle range of actuated arm	上摆 Up	31.5°
	下摆 Down	74°
输入电源 Power supply	三相 Three-phase 380VAC -10%~+10%, 49~61HZ	
电源容量 Power capacity	10KVA	
额定功率 Rated Power	6kw	
保存温度 Storage temperature	-10°C~70°C	
工作环境 Work environment	-10°C~100°C, RH≤80%	
防护等级 Protection	IP55	

● 负载-频次 Load-Frequency

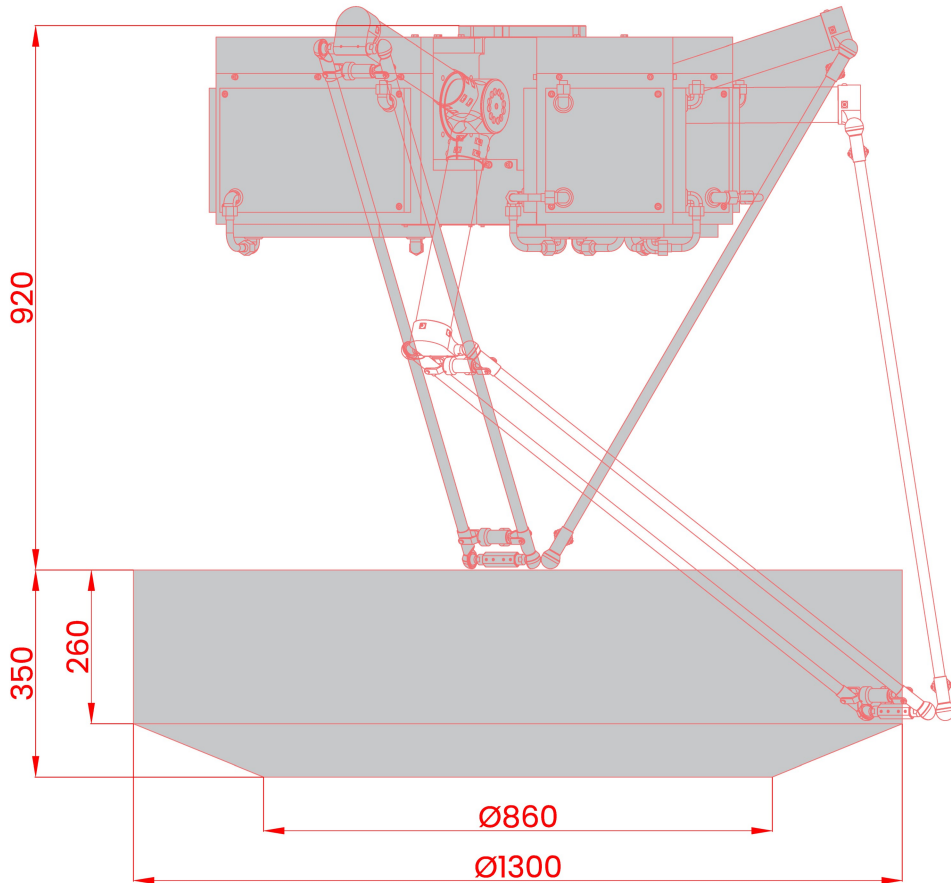


名称 Name	循环模式 Model	运动距离 Distance
轨迹1 Trajectory1	P1 → P2 → P3 → P4 → P3 → P2 → P1	h=25, b=305
轨迹2 Trajectory2	P1 → P2 → P3 → P4 → P3 → P2 → P1	h=25, b=500
轨迹3 Trajectory3	P1 → P2 → P3 → P2 → P1	h=25, b=305
轨迹4 Trajectory4	P1 → P2 → P3 → P2 → P1	h=25, b=500

特别注意: 图中节拍时间在实际条件下测得, 但根据实际运用情况的不同 (工具数据、路径半径、夹具启动等), 节拍时间也会发生变化。

外形尺寸及运动范围

Outline dimensions and Working range (mm)



说明:

图示下部加深部分为机器人动平台几何中心的运动范围，上部为圆柱空间，并在下部向内收敛。

Instruction:

The bottom gray part is the work-place of the center point of moving platform, which is composed of a cylinder at the top and a circular truncated cone at the bottom.

法兰 Flange (mm)

基座安装 Base installation (mm)

